



FACT SHEET

Location

The Harbour View Tower offers prestigious office space in the prime location of Haiphong, with only 200 metres from the main entrance of Haiphong Harbour and within walking distance of post office, government agencies and banks.

With 3,022 square metres of total rental area, the complex is the most spacious business building in Haiphong. Well designed floor layout allows for maximum flexibility and efficient space planning.

Opening Date

October 1998

Property Management

Minor International

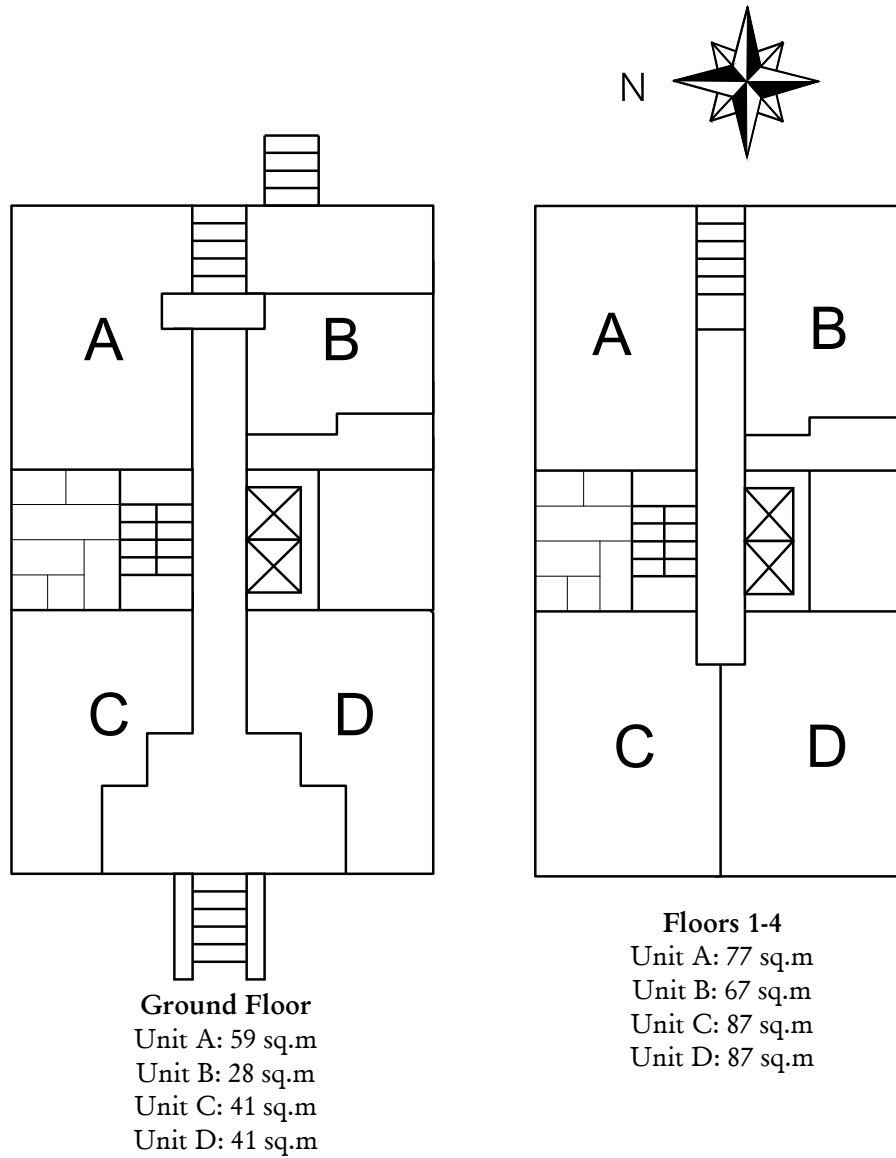
Architect

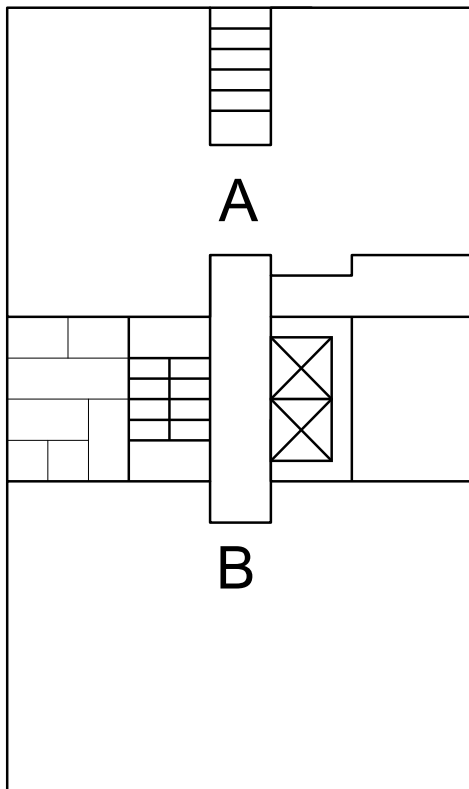
John Light Body

General Director

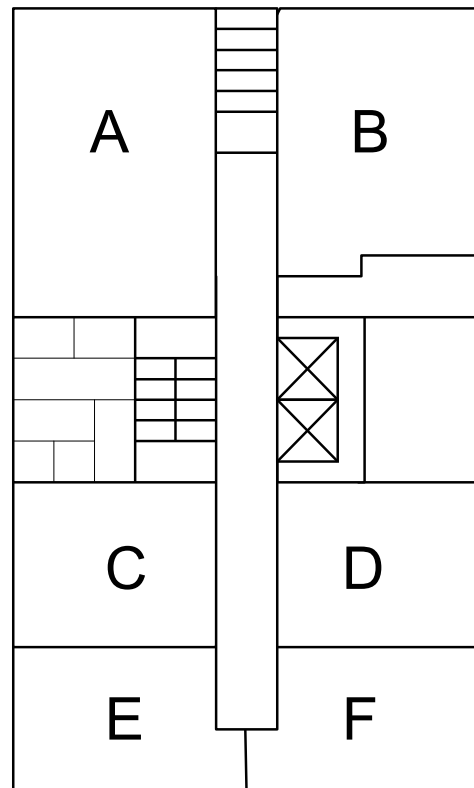
Jack Reilly

Floor Plan





Floors 5-6-9
Unit A: 152 sq.m
Unit B: 176 sq.m



Floors 7-8
Unit A: 79 sq.m
Unit B: 67 sq.m
Unit C: 42 sq.m
Unit D: 42 sq.m
Unit E: 37 sq.m
Unit F 37 sq.m

Services

We cater high quality service and facilities including:

- Full power back-up
- High speed internet connection (broadband)
- Central air-conditioning
- 24 hours security
- Daily cleaning
- Fire protection system according to European standards
- Licensing legal aid

In addition, the proximity of the first class Harbour View Hotel, gives you convenient access to business centre, meeting and conference rooms (up to 300 guests) and restaurants.

20% discount from public rate for accommodation and conference meetings.

Address: 4 Tran Phu Street Haiphong, Vietnam

Telephone: +84 31 3 827 829

Fax: +84 31 3 827 838

Email: ot@harbourviewvietnam.com

Website: www.harbourviewvietnam.com
www.minornet.com